



ESTATE AGENTS



Pine Trees, Portsmouth Road, Esher, Surrey, KT10 9JF £1,850 per month

Nestled in a sought-after residential area, this charming two-bedroom apartment offers a comfortable and convenient living space.

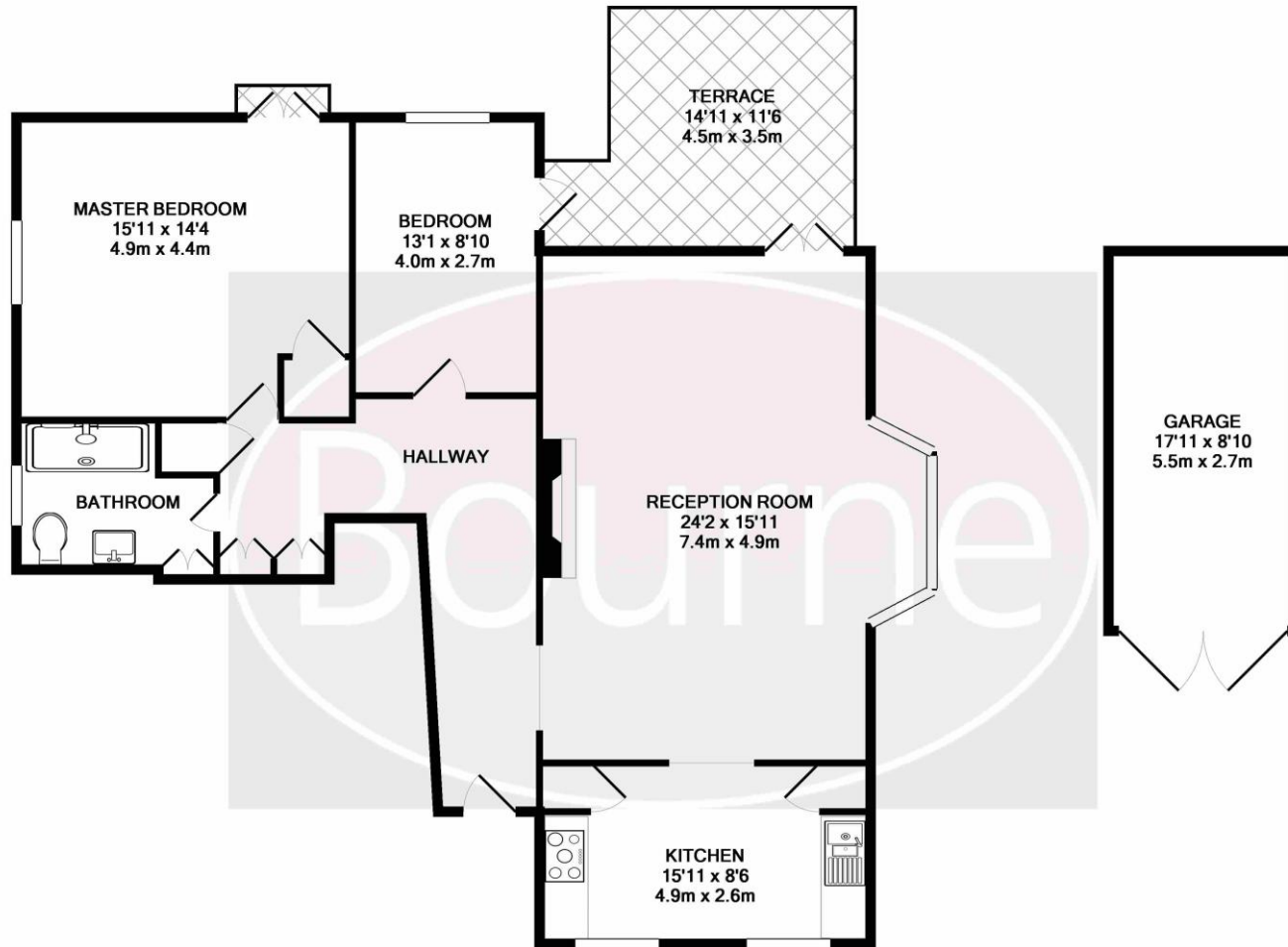
The property provides two bedrooms, large living room, modern family bathroom, a spacious garden, and a delightful patio area. Residents can also make use of the communal gardens.

The interiors are bright and airy, creating a welcoming atmosphere throughout. Located within easy reach of local amenities and transport links.

- Two Double Bedrooms
- Spacious Lounge
- Modern Bathroom
- Character Property
- Private Patio
- Garage & Off Road Parking
- Pet Friendly
- Unfurnished
- Available from Mid- April
- Council Tax Band C
- Minimum Term 12 Months



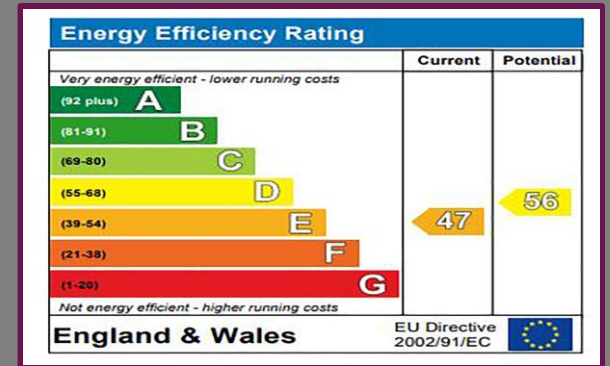
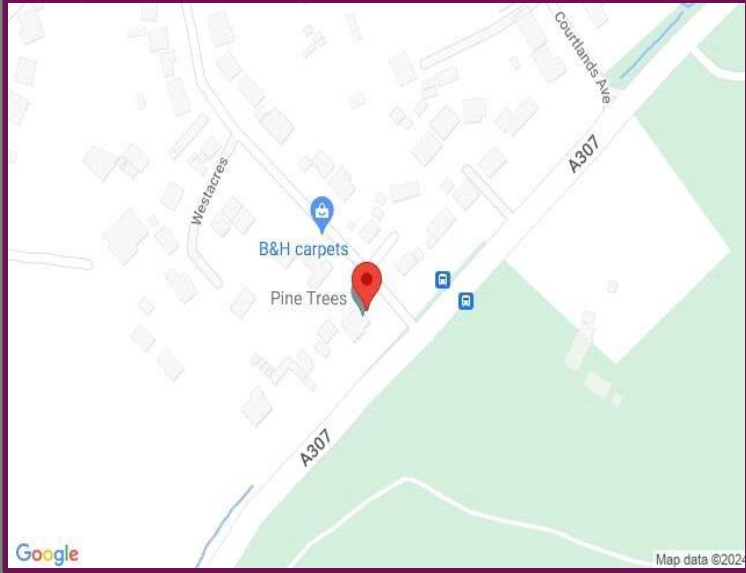
Floorplan



TOTAL APPROX. FLOOR AREA 1377 SQ.FT. (127.9 SQ.M.)

Whilst every attempt has been made to ensure the accuracy of the floor plan contained here, measurements of doors, windows, rooms and any other items are approximate and no responsibility is taken for any error, omission, or mis-statement. This plan is for illustrative purposes only and should be used as such by any prospective purchaser. The services, systems and appliances shown have not been tested and no guarantee as to their operability or efficiency can be given.

Location



We aim to make our particulars both accurate and reliable but they are not guaranteed, nor do they form part of an offer or contract. If you require clarification of any points then please contact us especially if you are travelling some distance to view. Please note that appliances and heating systems have not been tested and therefore no warranties can be given as to their good working order.



A refreshing choice...

COBHAM: 13 Oakdene Parade, Cobham, Surrey, KT11 2LR

Tel: 01932 864242 | Email: cobham@bourneestateagents.com

Web: www.Bourneestateagents.com