



Office 1, 27a High Street, Esher, KT10 9RN

£500 pcm

# Office 1, 27a High Street, Esher, KT10 9RN

**DESCRIPTION** OFFICE SPACE ONLY, Bills Included, Esher High Street Location, Unfurnished, Available Immediately

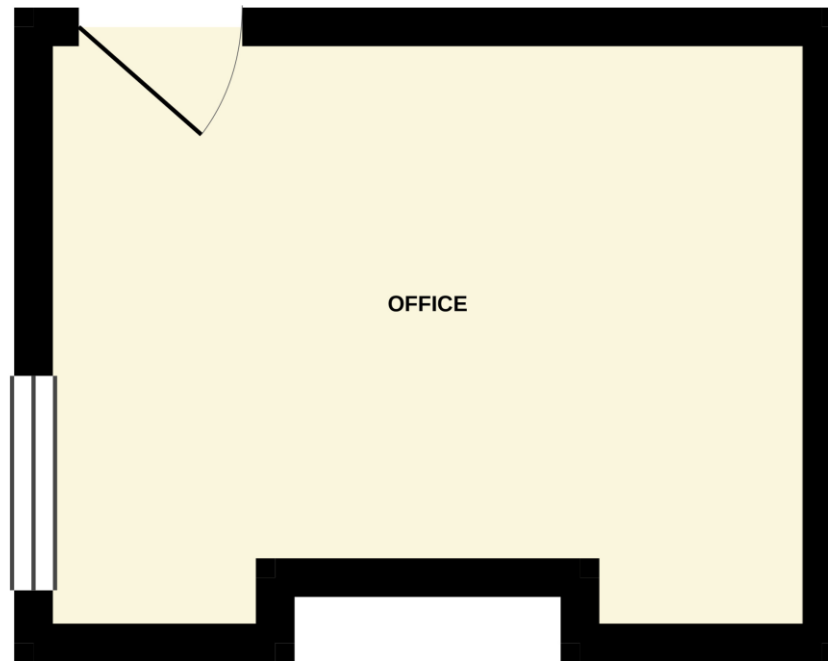
**LOCATION** Set within the heart of Esher High Street in, with its boutique shops, restaurants and everyman cinema, the property is only 0.9 miles from Esher train station.

- OFFICE SPACE ONLY
- PRICES SUBJECT TO ADDITIONAL VAT
- Bills Included
- Esher High Street Location
- Unfurnished
- Available Immediately



# Floor Plan

SECOND FLOOR  
109 sq.ft. (10.1 sq.m.) approx.

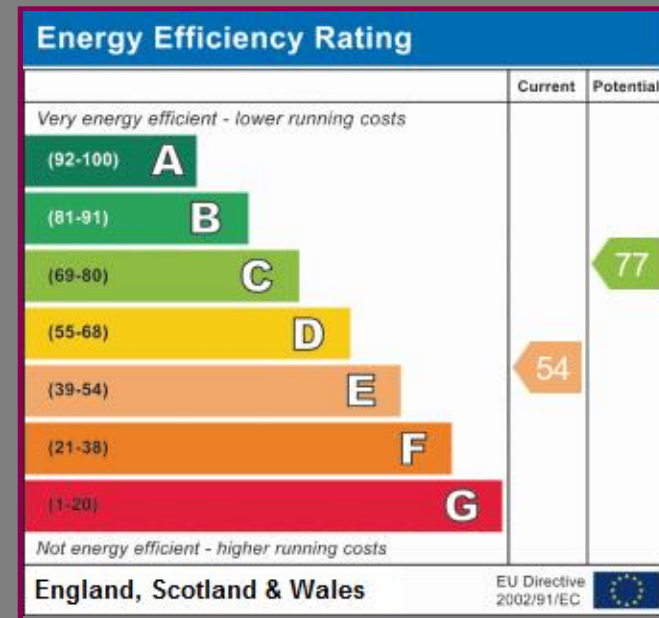
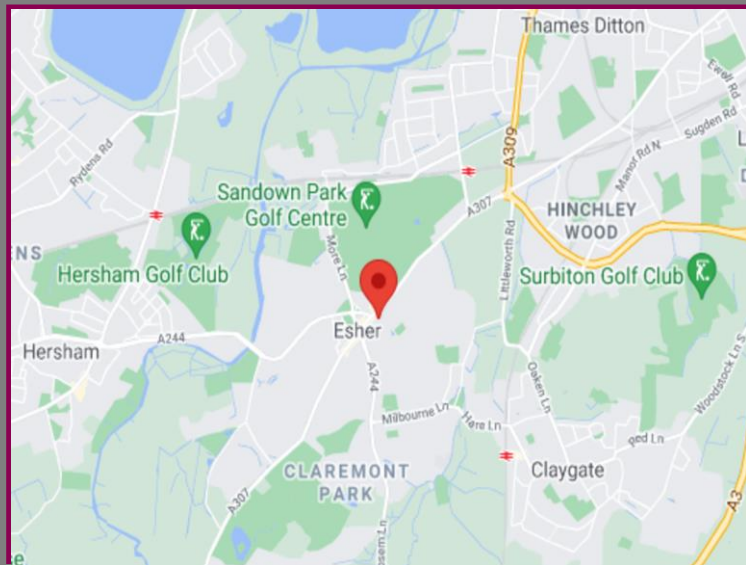


TOTAL FLOOR AREA : 109 sq.ft. (10.1 sq.m.) approx.

Whilst every attempt has been made to ensure the accuracy of the floorplan contained here, measurements of doors, windows, rooms and any other items are approximate and no responsibility is taken for any error, omission or mis-statement. This plan is for illustrative purposes only and should be used as such by any prospective purchaser. The services, systems and appliances shown have not been tested and no guarantee as to their operability or efficiency can be given.  
Made with Metropix ©2021

# Location

Set within the heart of Esher High Street in, with its boutique shops, restaurants and everyman cinema, the property is only 0.9 miles from Esher train station.



We aim to make our particulars both accurate and reliable but they are not guaranteed, nor do they form part of an offer or contract.

If you require clarification of any points then please contact us especially if you are travelling some distance to view.

Please note that appliances and heating systems have not been tested and therefore no warranties can be given as to their good working order.



**Esher Office:** 29 High Street, Esher, Surrey, KT10 9RL

**Sales:** 01372 468636 | **Lettings:** 01372 477150 | **Web:** [www.Bourneestateagents.com](http://www.Bourneestateagents.com)

**Email:** [esher@bourneestateagents.com](mailto:esher@bourneestateagents.com) | [esherlettings@bourneestateagents.com](mailto:esherlettings@bourneestateagents.com)

Incorporating

