



Alton, Hampshire

The property is bright and airy and has a good-sized kitchen, and separate Living/Dining room. There is a separate and convenient w/c, two generous bedrooms and a family bathroom.

Being offered with no onward chain, this property has the option of being purchased with the tenant in situ so would make an ideal buy-to-let purchase.

Leasehold

985 Years Remaining On Lease

Council Tax Band : C

Share Of Freehold

£1200pa service charge

These details are to be confirmed by the vendor's solicitor and must be verified by a buyer's solicitor.

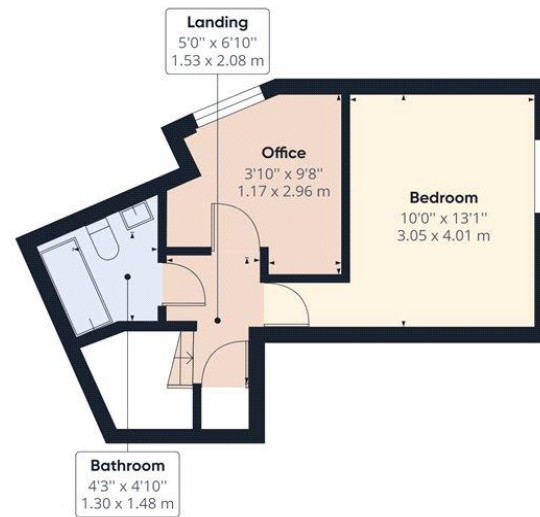
- Two Bedrooms
- Duplex Apartment
- Town Centre Position
- Undercroft Parking
- Convenient For Mainline Station
- Ideal Buy To Let Opportunity
- No Onward Chain



Floorplan



Ground Floor



Floor 1

Approximate total area⁽¹⁾

599.84 ft²
55.73 m²

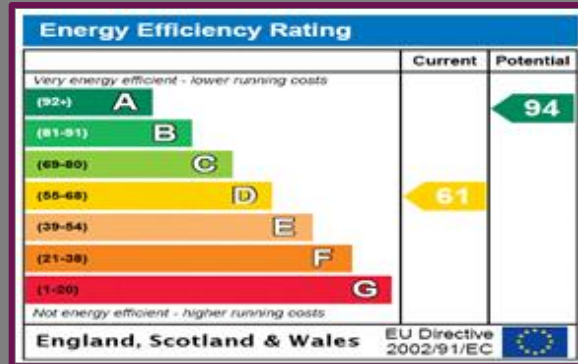
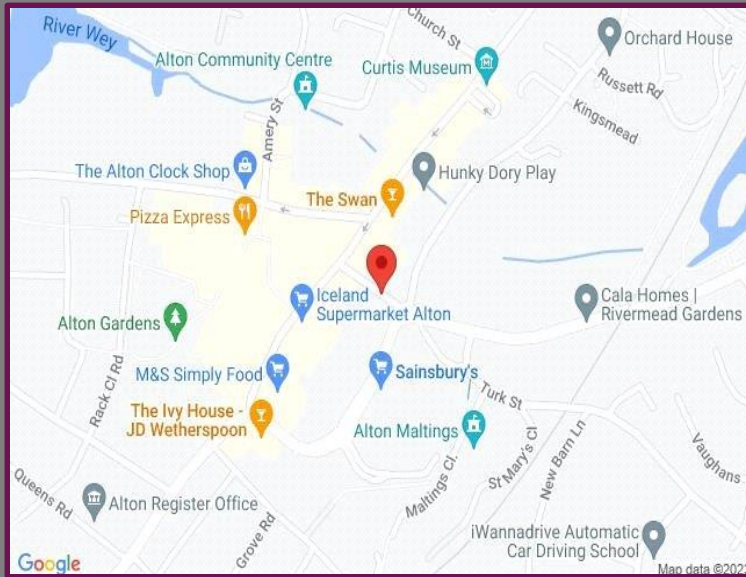
(1) Excluding balconies and terraces

While every attempt has been made to ensure accuracy, all measurements are approximate, not to scale. This floor plan is for illustrative purposes only.

GIRAFFE 360

Location

This property is located on Turk Street, a town centre location. The town provides a variety of shops, restaurants and a bus service. Alton mainline train station serving London Waterloo is also within walking distance.



We aim to make our particulars both accurate and reliable but they are not guaranteed, nor do they form part of an offer or contract. If you require clarification of any points then please contact us especially if you are travelling some distance to view. Please note that appliances and heating systems have not been tested and therefore no warranties can be given as to their good working order.



A refreshing choice...

FARNHAM: 29 Downing Street, Farnham, Surrey, GU9 7PD

Tel: 01252 723383 | Email: sales@bourneestateagents.com

Web: www.Bourneestateagents.com